

*Encouraging
Independence
through
Dedication
and Growth*

*Cerebral Palsy of Massachusetts
Annual Report*



2009

Encourage

Mission Statement

Cerebral Palsy of Massachusetts exists to provide a continuum of services that support the efforts of children and adults with developmental disabilities to live as independently as possible in a less restrictive and safer environment.

Through personal involvement, individual decision-making is supported and encouraged to enhance the control a person has over his/her own life while fostering self-sufficiency.

The agency, through its programs and services, encourages the inclusion of people with developmental disabilities into the mainstream of society including social, recreational, family and work activities.



Technology

Message to the Community

At astonishing rates, CPMA has continued to grow and expand in all different directions over the past year. The Fiscal Intermediary Program processed the payrolls for 7,629 consumers who employed over 21,000 Personal Care Attendants (PCAs). This is a great increase from last year's figures of 6,685 consumers and 19,000 Personal Care Attendants. Our overall numbers have been steadily increasing as we now serve a total of 11,423 consumers agency wide. We are not only growing in numbers, but in programs as well. In addition to direct therapies, we were able to help children in our therapy program receive much needed bracing equipment and wheelchairs by providing wheelchair evaluation, analysis, and production, as well as providing additional support in aquatherapy.

Through the use of cutting-edge technology, 6,500 to 7,500 PCA timesheets are processed electronically each week. We are in the midst of our paperless transition and as a result, we can serve our consumers more quickly and effectively than ever before. We have been able to process over eight million pieces to ensure a seamless transition as our agency adapts to an ever-changing environment.

We would like to congratulate our 2009 Employees of the Year; Sue Trucchi and Merly Chirito. They both possess a strong passion for both the company and our consumers, as their sincerity and heart is shown everyday at work. Employees such as Sue and Merly continue to enhance our mission and we are grateful that they are on our team. Another member of our team that we would like to acknowledge is Gregory Walsh, who is a consumer as well as a member of the Board of Directors. Greg possesses a strong willingness to give back to the community and we are fortunate to have shared in some of his journey through our organization. We would also like to extend our sincere appreciation to all of our staff, consumers, and supporters as well as our dedicated board members that run our committees, including; Audit, Finance, Investment, Nominating, and Personnel.

Thank you,



James Galvin
President



Thomas Zukauskas
Chief Executive Officer



James Galvin
President



Thomas Zukauskas
Chief Executive Officer

The background is a rich, golden-brown color with a repeating pattern of ornate, stylized floral and scrollwork motifs. The patterns are rendered in a slightly darker shade of gold, creating a subtle relief effect. Scattered throughout the background are numerous small, bright white sparkles, each with a four-pointed starburst effect, adding a shimmering, celebratory quality to the design.

Independence



Profiles of Strength

Cerebral Palsy of Massachusetts helps individuals with long-term disabilities live independent lives by offering a variety of programs to fit many needs. One such program, the Options Independent Living Program, provides assistance to disabled persons and their families. Through the Options Independent Living Program, a number of consumers enjoy the freedom of living in a home they can call their own, while receiving assistance from Personal Care Attendants. The Supported Living Program, which is made possible by contracts from the Massachusetts Rehabilitation Commission and the Department of Developmental Services, offers consumers assistance in managing their PCA's and other daily activities.



Beginning his journey at eight months old with Cerebral Palsy of MA (CPMA), Greg Walsh has been an amazingly instrumental piece of the agency. Up until the age of five, Greg attended what was known at the time as Cerebral Palsy of South Shore, where he received occupational, speech and physical therapy. His elementary and high school years at the Cotting School allowed him the necessary preparation for his future endeavors. Greg has been a consumer of the Options Independent Living Program for the past eight years where he is able to receive day-to-day assistance. While maintaining a 3.81 grade point average, Greg now attends Massasoit Community College and has received a Microsoft Office Certificate. At Massasoit, Greg is a part of the Helping Hands Club and is a member of Phi Theta Kappa, a National Honor Society for two year colleges. Outside of his extracurricular activities at college, Greg is also a member of the Partners of Youth with Disabilities, Youth of Preparation for Independence, and Mentor Match. When Greg was 18, Tom Zukauskas, Chief Executive Officer of CPMA, asked Greg to join the Board of Directors, which he has been serving on ever since. Greg has also served on the Personnel and Finance Committees at CPMA for the past six years. "The Options Program, provided by CPMA, has allowed Greg the ability to be more independent and stay very much politically and socially involved," says Janice Walsh, Greg's mother. Greg has taken every opportunity available to him in order to give back to his community and to fight for causes that he believes in. In August 2009, October was declared as Disability History and Awareness Month for the state of Massachusetts, another amazing accomplishment that Greg was part of. When Greg is not attending class or a club meeting, he enjoys attending Boston sports games, traveling, being on the computer, watching TV, and spending time with his friends. Greg's inspirational approach to life has been to live each day to the fullest and to make the most of every situation; which he is able to do, with the help of CPMA.





Dedication

Employees of the Year

Congratulations to Sue Trucchi and Merly Chirito; Cerebral Palsy of MA Employees of the Year. This award is given to employees who exhibit leadership, dedication, and the willingness to go above and beyond what is required in order to help others. Thank you and congratulations Merly and Sue for demonstrating employee excellence day in and day out.

Sue Trucchi began her career with Cerebral Palsy of MA in 1995 as an independent contractor for the Options Independent Living Program. Sue was hired as the first staff nurse when the part-time position was created. From there, Sue worked as a full-time staff nurse and was promoted to the Evaluation Department Supervisor in July of 2008. The Options Program serviced 500 consumers when Sue began her career and now it services approximately 3400; an increase that makes Sue very proud. Being part of a program that enables consumers to remain in their homes and promoting independence is something that Sue values highly about her job at CPMA. When Sue is not working, she enjoys yoga, reading, and her morning walks with her yellow lab, Casey.

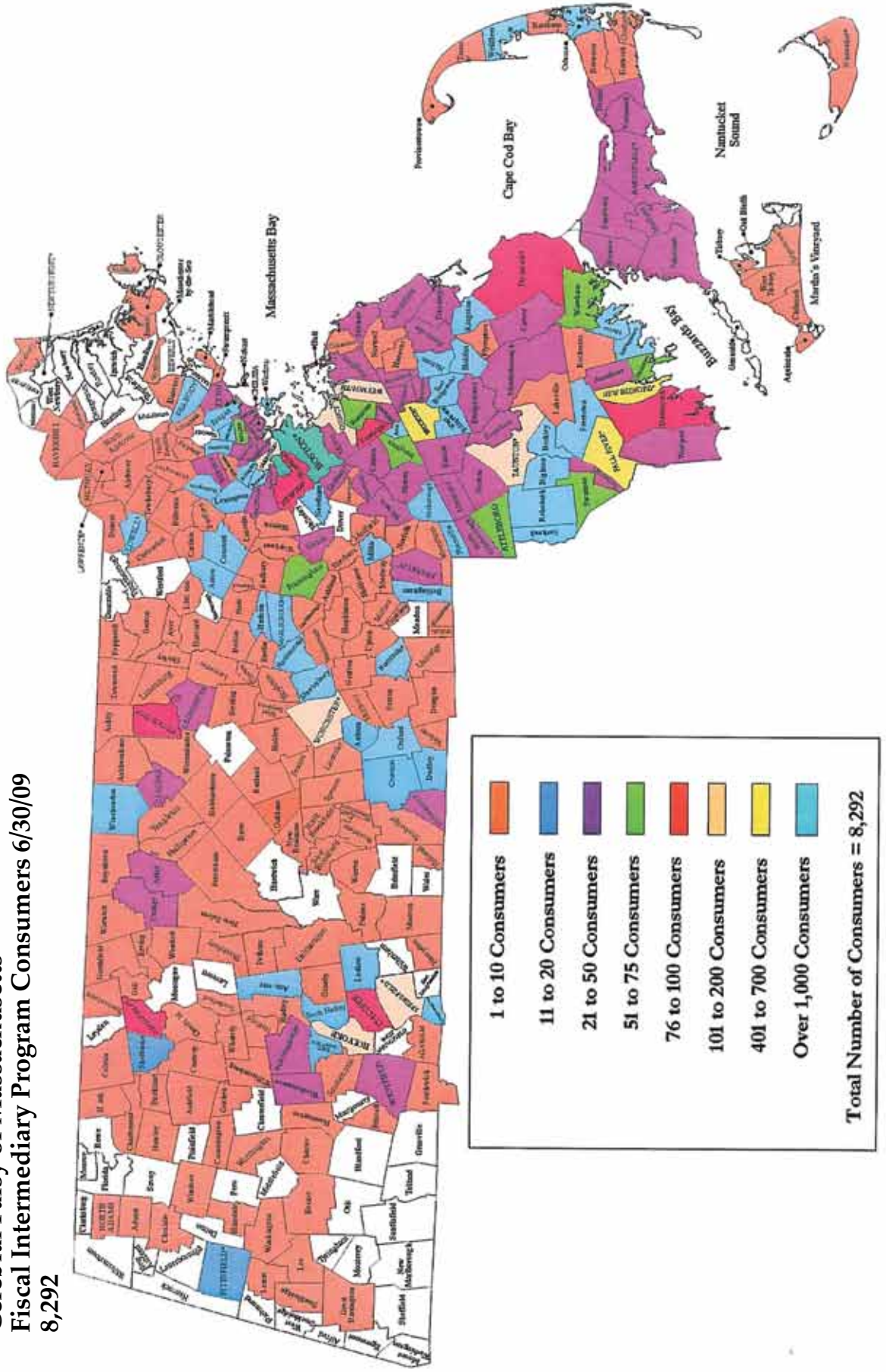
Merly Chirito started at Cerebral Palsy eight years ago as a Payroll Specialist and is now a Senior Payroll Specialist. Merly is one out of two CPMA employees who assist with translating Spanish for our consumers. Merly loves attending company outings especially the Annual Boat Cruise. Some memorable experiences that Merly holds dear to her heart from working at CPMA, are decorating the halls for the holidays and waitressing at the Consumer Christmas Party at Lantanas.



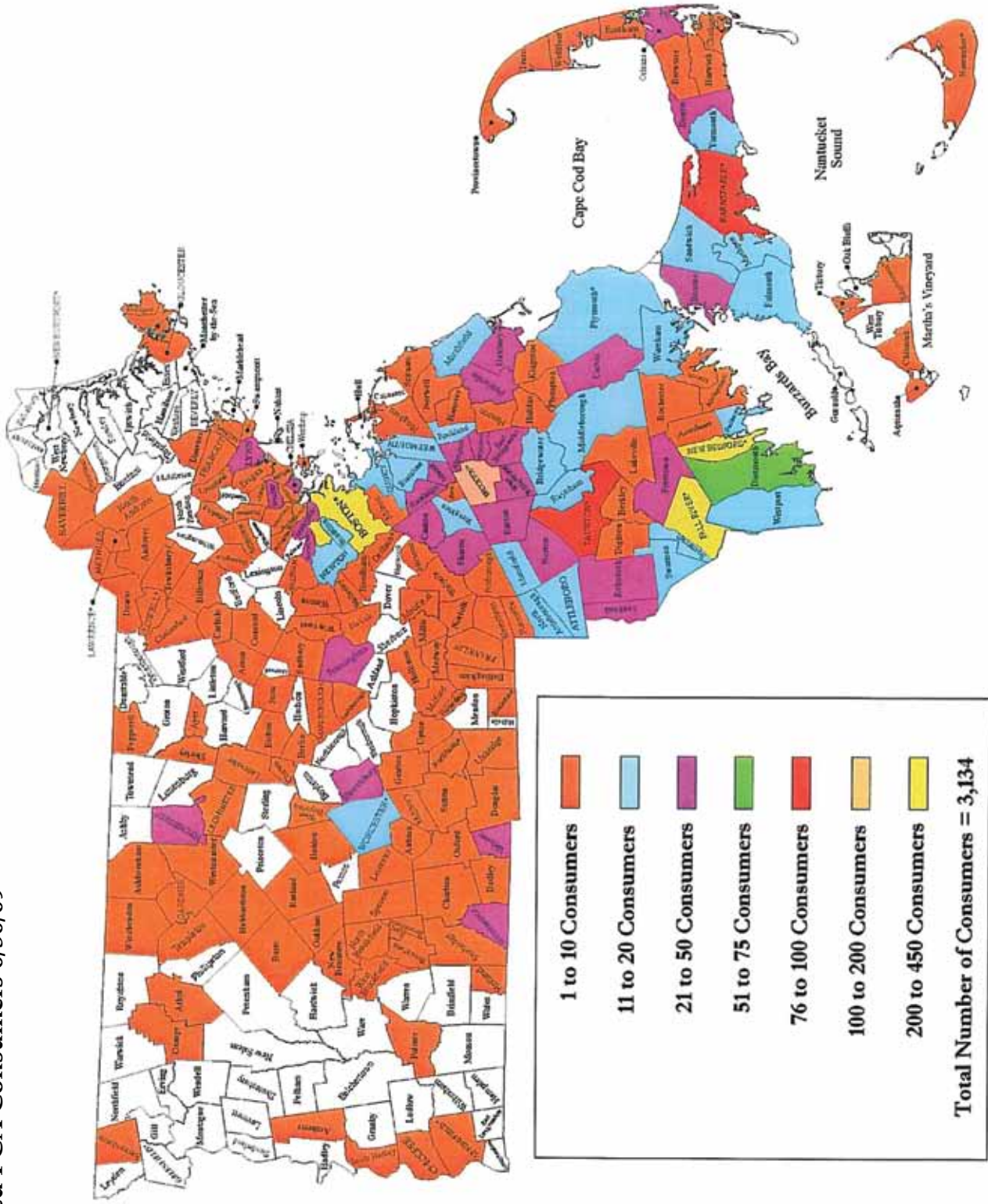
*CEO Tom Zukauskas;
Linda McWalter, Payroll Supervisor;
Merly Chirito, Sue Trucchi;
Linda Andrade, Options Program Director*

Our Service Area

Cerebral Palsy of Massachusetts
Fiscal Intermediary Program Consumers 6/30/09
8,292



**Cerebral Palsy of Massachusetts
Approved PCA Consumers 6/30/09
3,134**



The background is an abstract, textured composition of brushstrokes in various shades of purple, blue, and red. The colors are layered and blended, creating a rich, multi-toned effect. The word "Choices" is centered in a white, elegant cursive font with a subtle drop shadow.

Choices

Our Programs

Options Independent Living Program

The Options Program continues its tradition of serving consumers of all ages with a wide range of disabilities. The program is named for the choices and independence that it affords its consumers. The Options Program operates four separate services:

Personal Care Management

This consumer-directed program gives individuals with disabilities the ability to recruit and hire their own Personal Care Attendants (PCAs) to assist them with hands-on personal care needs. The Options' staff works with each consumer to develop a unique service plan to meet his/her specific needs. The Options staff guides consumers through the MassHealth approval process for PCA services and teaches consumers and/or their surrogates how to be an effective employer.

The Options' PCA Program experienced a two percent increase in the number of consumers enrolled this fiscal year. It operates as the second largest PCA program in Massachusetts, serving individuals throughout Massachusetts, including Cape Cod and the Islands. Options staff members include individuals fluent in English, Portuguese, Spanish, Arabic, Creole, and Russian to better serve all members of the community.

Supported Living Program

The Options Program also provides case management services through its Supported Living Program. Through this program, 16 adults received services under a contract with the Department of Developmental Services and 23 consumers were served under a contract with Massachusetts Rehabilitation Commission. This program experienced a 33% increase in this fiscal year.

Real Choice Pilot

In March 2006 the Options Program took over operation of this new program. This is a small, pilot program that allows individuals with disabilities to control an individual budget, which they can use to purchase goods or services to increase their independence. This program is funded through the University of Massachusetts Medical School as a possible model for a future program of consumer-directed services through Medicaid funding. There were four consumers served in this program that has been extended through FY '10.

Resource Department

The Resource Department was created as a Cerebral Palsy of Massachusetts funded program in September 2007. Through the Resource Department, we provide information, referrals and advocacy to those consumers who may not qualify for our PCA or Supported Living Programs. This is done in cooperation with Independent Living Centers, other agencies and our PCA Program Skills Trainers when appropriate. We have worked with more than 225 consumers in the 2009 fiscal year.

The Resource Department continues to develop a database of resources that will be available to a wide range of consumers and agencies. The Resource Department also provides Skills Training for consumers with Multiple Sclerosis referred to us by the Central New England Chapter of the Multiple Sclerosis Society. We are currently providing services to five consumers under our contract with the Multiple Sclerosis Society.

The background is a vibrant green with a repeating pattern of concentric circles. Overlaid on this are several vertical, semi-transparent stripes in varying shades of green, creating a layered effect. The word "Growth" is centered in a white, elegant script font with a subtle drop shadow.

Growth



Our Programs continued

Fiscal Intermediary Program

The Fiscal Intermediary Program, which has been in operation for ten years, continues to experience tremendous growth as it has become a favorite program of the state. Under the direction of Larry Spencer, CFO and Linda McWalter, Payroll Supervisor, the Fiscal Intermediary Program processed payrolls for 7,629 consumers who employed over 21,000 Personal Care Attendants (PCAs). Through the use of cutting-edge technology, 6,500 to 7,500 PCA timesheets are processed electronically each week. Using special optical character recognition software, handwritten timesheets can be scanned and read, allowing the burgeoning program to run efficiently and effectively.

Laura Fraticelli, Billing Supervisor, is responsible for coordinating the efforts of the billing and accounts receivable staff while Elizabeth Seguinot, Document Imaging Supervisor, and her staff ensure that all fiscal intermediary records are archived properly, which allows for efficient document retrieval and storage for all staff. The program, which provides fiscal intermediary services for 19 Personal Care Management agencies throughout Massachusetts, is designed to help equip consumers with the tools they need to remain in the most independent setting possible.

As the program continues to grow, the agency continues to seek ways to improve and enhance the delivery of services to people with disabilities. Major software upgrades and improvements are currently being developed, which will allow the agency to continue to provide state-of-the-art services. The agency's technology services are directed by the IT Manager, Terrence Case.

Adult Class

Facilitated by Program Director Barbara Robbins, our Adult Class meets one evening per week at the Lincoln Hancock School in Quincy and is sponsored jointly with the Quincy Recreation Department. For over 30 years, our program has provided adults with special needs the opportunity to develop their talents for music, arts and crafts, and drama, as well as an arena to socialize with their peers. Each year, the class puts on a Christmas pageant and an end of year show that parents and friends are invited to. This year the show was a tribute to the "Beatles" – the participants sang and danced to their favorite songs. There were about 75 family and friends in the audience. The Adult Class includes many longtime participants from throughout the South Shore area.

Children's Therapy Program

As part of the partnership between our agency and the Quincy School System, we have a Children's Therapy Program for the children of Quincy. The program supplements therapy provided in a child's Individual Education Plan and is offered to families with limited financial resources. The program provides services at several schools in Quincy. In addition to individual therapy, the following programs were implemented this year: wheelchair evaluation, analysis, and production, aquatherapy services, and progress notes for all children. In total, the Children's Therapy Program provided 649 therapies this past year which is broken down as follows: physical therapy, 393; speech therapy, 72; and occupational therapy, 184. The program is under the direction of our therapy supervisor, Rebecca Brown.

Board of Directors 2008 - 2009

Officers

James Galvin, *President* • James Hickey, *Vice President*
David Sprague, *Treasurer* • Kathleen Morris, *Assistant Treasurer*
Meredith Curran Desharnais, *Secretary*

Directors

Joseph Curran • Ernest Falbo • Madelyn M. Jackman • Margaret Kern
William Mitchelson • Roger Pritzker • Francis Puccia • Donald Uvanitte
Gregory T. Walsh • William Willoughby

Advisory Council

Sheriff Michael Bellotti • David Dennis • Barbara M. Hunt • Charles Merrill
Senator Michael Morrissey • Robert Vincent • Janice Walsh

Chief Executive Officer

Thomas Zukauskas

Management Team

The Cerebral Palsy Management Team is comprised of veteran human service professionals who work side by side with staff, consumers, families, and local community partners to develop the most effective plans for growth in a rapidly changing environment. The average length of services for our managers is 11 years. Our management team includes:

Front Row: Linda McWalter, Rhonda-Lee Giossi, Laura Fraticelli, Dee Dee Obert
Back Row: Joseph Seery, Terrence Case, Elizabeth Seguinot, Thomas Zukauskas, Larry Spencer,
Linda Andrade, Sue Trucchi, Desiree Gibbs



Special Events



Holiday Party

Cerebral Palsy of Massachusetts continued its annual tradition of hosting a holiday party for its consumers on December 14, 2008. Nearly 450 consumers gathered at The Lantana in Randolph for a day of holiday cheer which was co-sponsored by Sir Speedy, H.A.L.O and Toys for Tots. The consumers enjoyed a pasta buffet, a caricature artist portrait, entertainment from South Shore Joey clowns, toe-tapping music from our DJ, and finally a visit from Santa Claus with gifts for all the children. Many thanks to the Interact Club at North Quincy and Quincy High Schools for volunteering their time to make this party one to remember!

Golf Tournament

For the tenth year in a row the community came out in force to support Cerebral Palsy's Annual Golf Classic held on Thursday, May 28, 2009 at Pine Hill Golf Club in Plymouth, MA. More than 100 golfers enjoyed a day of fun, sun and golf and helped raise \$40,000. Proceeds from the tournament will be used to enhance programming and vital resources that help thousands of individuals with developmental disabilities throughout Massachusetts.



Contact Information

Agency Administration
617-479-7443 ext. 203

Agency Web Site
www.masscp.org

Options Program
800-924-7570

Fiscal Intermediary Program
877-479-7577



Financial Report

July 1, 2008 – June 30, 2009

Expenses

Children’s Therapy Program	<1%
Supported Living Program	<1%
Personal Care Attendant Program	1.27%
Fiscal Intermediary Program	98%
Administration and Fundraising	<1%

Income

Children’s Therapy Program	<1%
Supported Living Program	<1%
Personal Care Attendant Program	1.3%
Fiscal Intermediary Program	98.5%
Administration and Fundraising	<1%

Consumers Served by Program

	FY06	FY07	FY08	FY09
Children’s Therapy Program	25	10	19	50
Fiscal Intermediary Program	5,420	5,893	6,685	7,407
Adult Class	16	17	17	17
Special Events	452	626	800	815
Options Program*	2,465	2,678	3,078	3,134
TOTAL Consumers Served	8,378	9,224	10,559	11,423

Total Consumers Served in 2009.....11,423

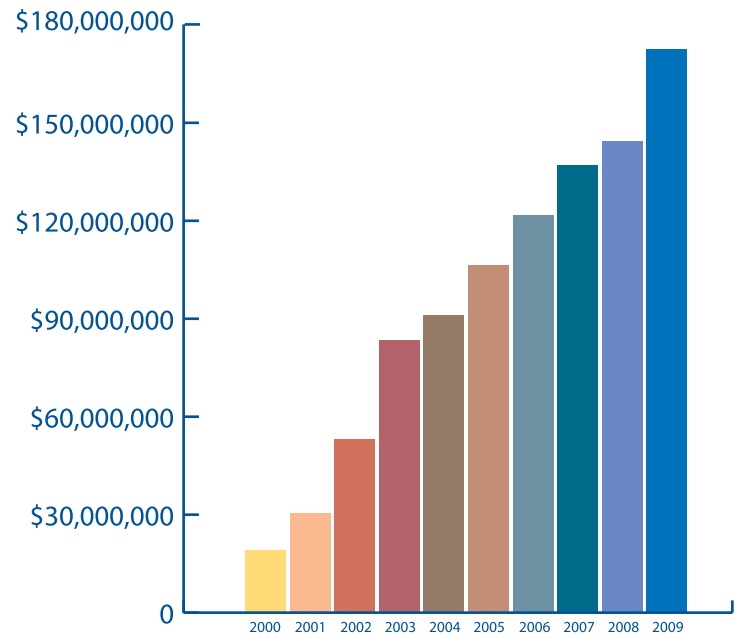
Total Revenue in 2009..... \$172,165,000

**Consumers are often enrolled in multiple events/programs.*

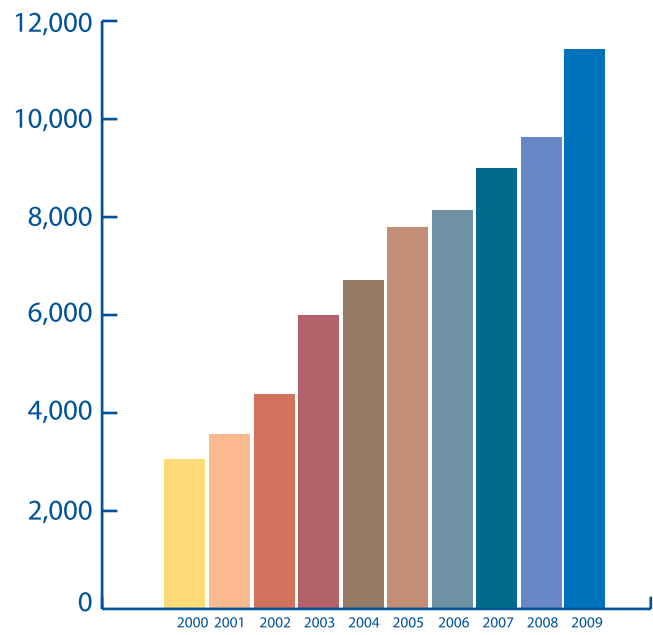
Your Support is Welcome

Please consider Cerebral Palsy of Massachusetts in your long-term financial planning as a means of providing financial security for you, your loved ones and the agency. Everyone can benefit while you maximize your assets. If you would like to explore planned giving opportunities, please contact the agency at 617-479-7443 ext. 201.

Total Revenue



Total Consumers Served





**Cerebral Palsy
of Massachusetts**

43 Old Colony Ave., Quincy, MA 02170

